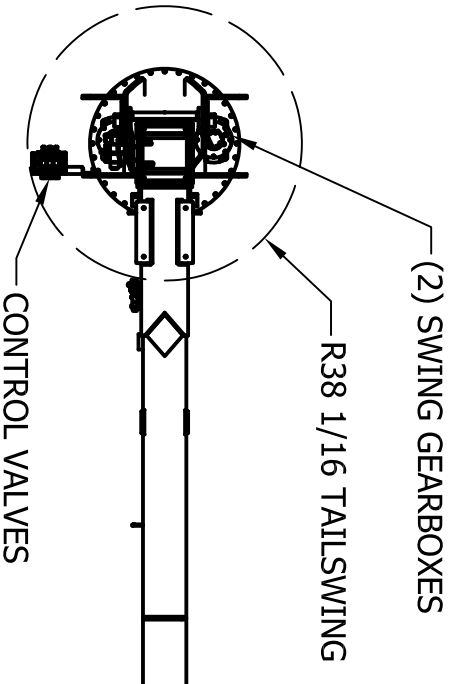


4

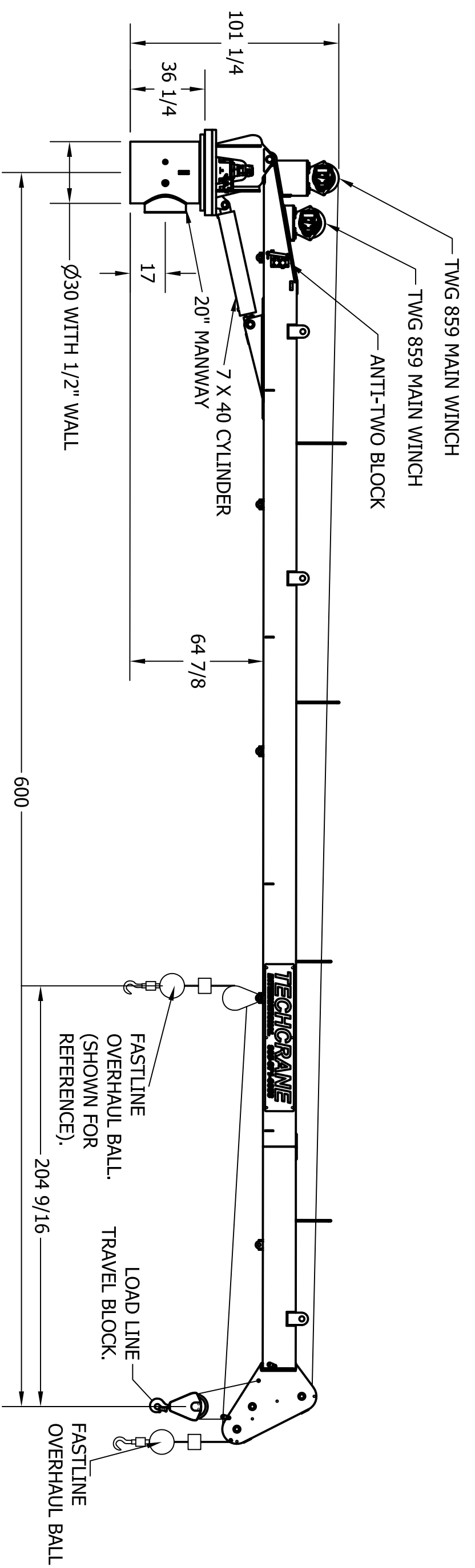
3

2

1



- NOTES:
1. THE INFORMATION PROVIDED IN THIS DOCUMENT IS INTENDED FOR INFORMATIONAL PURPOSES ONLY AND IS SUBJECT TO CHANGE WITHOUT NOTICE
 2. WEIGHT SHOWN IS APPROXIMATE AND DOES NOT INCLUDE WELD, WIRE ROPE, HARDWARE AND MISCELLANEOUS PARTS.
 3. HOSE HANDLING CONFIGURATION IS AVAILABLE.



DESIGNED BY: F. SHAD
DRAWN BY: J. BOURG
WEIGHT: TBD
APPROVED BY: SEE APPROVAL STAMP
FILE: ~~M:\MAM\DESIGN\CONSTR\ROD\CON\DIMENSS\1002A\APR151012\1002A.DWG~~

MATERIAL NOTES:
1. BURN PER DIMENSIONS SHOWN.
2. PLATE FLATNESS AFTER BURNING TO BE WITHIN ASTM SPECIFICATIONS.
3. REFER TO API SPEC 2C LATEST EDITION.
4. WHERE APPLICABLE - ROLL FORM PER DIMENSIONS SHOWN.
5. WHERE APPLICABLE - TACK WELD AS REQUIRED TO SECURE ROLLED CAN.
DESIGN STATE: PRELIMINARY

TECHCRANE INTERNATIONAL, LLC.
17639 HARD HAT DRIVE COVINGTON, LA. 70435 U.S.A.
PHONE (985) 871-0056 FAX (985) 871-0065

F10-50 GENERAL ARRANGEMENT

PART/DWG. NO.:
PRESENTATION

INFORMATION CONTAINED HEREON IS CONFIDENTIAL AND TRADE SECRET DO NOT DISCLOSE. USE OR REPRODUCE WITHOUT PRIOR WRITTEN APPROVAL FROM TECHCRANE INTERNATIONAL LLC.
UNLESS OTHERWISE SPECIFIED ALL DIMENSIONS ARE IN INCHES [] INDICATES MILLIMETERS
TOLERANCES
FRACTIONAL DIMENSIONS: +.01/-0 SURFACE FINISHES 125V

DATE: 7/28/17
REVISION NO.: 3.1
CO NO.:

SHEET 1 OF 2

A

B

C

D

A

B

C

D

4

3

2

1

F10-50

True Reaction Loads (1XLL+1XDL)

Maximum True Overturning Moment [ft-lbs]	292,917
Corresponding True Axial Load [lbs]	16,163
Maximum True Axial Load [lbs]	23,085
Corresponding True Moment [ft-lbs]	192,785

API Reactions (1XLL+2XDL)

API Maximum Overturning Moment (ft-lbs)	462,738
Corresponding Axial Force (lbs)	21,304
Maximum Axial Force (lbs)	33,550
Corresponding Moment (ft-lbs)	342,478
Basic Crane Weight (lbs)	12,620
Center of Gravity (ft)	11.93

NOTE: Customer to incorporate safety factor when using true reactions.